



A safer world

Thermal-Eye™ systems are designed and manufactured for applications in public safety, fire and rescue, industrial, security and transportation. Having pioneered infrared technology decades ago, our products continue to increase the safety of our neighborhoods, help rescue victims of accidents, monitor business facilities and assets and improve the safety of nighttime driving. In fact, with so many positive applications, in so many areas of life, Thermal-Eye products keep us all just a little bit safer. And when you stop to think about it, can any of us afford anything less?

13532 N. Central Expressway
MS37
Dallas, Texas 75243
972-344-4000 1-800-990-3275
www.Thermal-Eye.com

The Thermal-Eye 400D handheld thermal imaging camera is built on the industry standard Thermal-Eye 250D, but adds the flexibility and data storage capacity of the industry's leading PDA. The Thermal-Eye 400D is truly a unique offering for thermography professionals. The Thermal-Eye 400D provides clear color or black and white imaging with digital data storage and robust performance. The power to store and recall over 150 images offers unmatched functionality and performance, all at an affordable price.



Utilized in a number of different industries and markets, the Thermal-Eye 400D has applications as broad as the mind can imagine. The number of specific industrial applications is truly endless, from quality control, process monitoring, predictive maintenance and beyond. The Thermal-Eye 400D can save your team time and money by indicating problem areas, potential failures and hot spots that need to be immediately addressed. Using this distinctive heat-sensing technology, users can detect what the naked eye cannot see.

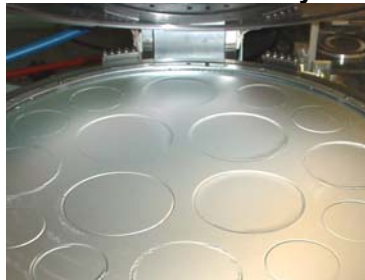
The Thermal-Eye 400D captures color thermal images of electrical, mechanical or refractory equipment for diagnosis of potential and costly problems. It sees and records heating and cooling losses in buildings, furnaces and ovens. Most importantly, the Thermal-Eye 400D ensures your processes are running smoothly, efficiently and safely.

Benefits

- Detect anomalies
- Identify need for process adjustments
- Monitor critical processes
- Examine parts
- Schedule maintenance
- Localize problems
- Eliminate human error

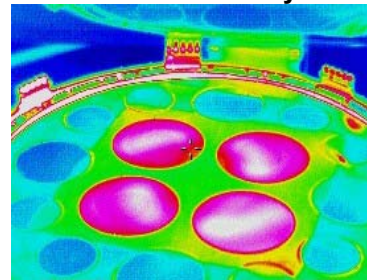
PRECISION OPTICS BLADDER PRESS

Without Thermal-Eye



Temperature distribution not visible with the naked eye.

With Thermal-Eye



Temperature distribution clearly visible with thermal imaging.

400D-1104

See the Unseen™



		Thermal-Eye™ 400D		
Focal Plane Array (FPA)	Type & Material	Uncooled Ferroelectric		
	Pixel Count	320 x 240		
	Thermal Sensitivity	< 100 mK		
	Spectral Response	7-14 μ m		
Optics	Lens Focal Length	25mm	50mm	75mm
	Field of View	(36° x 27°)	(18° x 13.5°)	(12° x 9°)
	Minimum Focus Distance	~ 18 in (.45 m)		~ 36 in (.9 m)
	Focus Type	Manual w/ adjustable Iris		Manual
Video	Output Format	Composite color in NTSC or PAL (camera RCA jack)		
	Monocular Viewfinder Image	Monochrome (black & white)		
	Digital Zoom	Full screen to 16x on PDA; 2x in camera		
Power	Power Source	NiMH rechargeable camcorder battery (6VDC)		
	Operating Time per charge	~ 2 hrs. with supplied battery		
	Conservation Mode	Camera operates with viewfinder off		
Physical Characteristics	Dimensions (w/ PDA stowed)	10.75"L x 5.5"W x 5.5"H (27 x 14 x 14 cm)		
	Weight	Less than 5 lbs. (2.3 kg)		
	Mounting Provision	1/4" (.6cm) - 20 Tripod Mount		
Environmental	Operating Temp	0°C to 50°C with PDA (32°F to 122°F) -20°C to 50°C without PDA (-4°F to 122°F)		
	Storage Temp	-20°C to 60°C (-4°F to 140°F)		
	Operating Humidity	0 – 95% non-condensing		
	EMC Compliance	FCC Part 15 & CE Mark		
Integrated Color Image Recorder (PDA)	Removable Image Storage	16 MB compact flash memory card (> 150 images storage capacity)		
	Integrated Front Lit Color Display	240 x 320 pixel H x V resolution w/ touch sensitive controls		
	LCD Display	Reflective TFT color LCD w/ real time update rate and front illumination		
	Data Logger Interface	Windows CE		
	Integrated Image Recorder/Color Display Features	Image storage/recall, text & audio annotation, color palette selection and digital zoom		
	PDA Battery (supplied)	Rechargeable 950mAh Lithium Polymer		
Ordering Information	Kit Type	400D w/ 25mm lens and PDA	400D w/ 50mm lens and PDA	400D w/75mm lens and PDA
	Kit Part Number (NTSC)	1669348-05	1669348-03	1669348-01
	Kit Part Number (PAL)	1669348-06	1669348-04	1669348-02
Standard Equipment	<ul style="list-style-type: none"> • Camera w/ Lens Cover & Lens Cleaning Cloth • AC/DC Battery Charger Kit (110/220VAC) • Rechargeable Camcorder Battery (NiMH) • Instruction Manual • Durable Carrying Case • RCA to BNC Adapter 			
Optional Accessories	<ul style="list-style-type: none"> • Extra Batteries • Extra Battery Chargers • Extra PCMCIA Adapters 			

All specifications are subject to change without notice

400 RevC