



PORTABLE INFRARED LONGWAVE THERMAL IMAGER

Finally a powerful thermal imager that's affordable...

IR-InSight™

The IR-InSight™ is a portable infrared camera with outstanding image quality, at a very affordable price. Viewing at a full 30 frames per second makes scanning simple. Snap up to 150 high quality infrared still images and easily prepare reports from your PC. Simply turn on the IR-InSight and begin scanning or capturing images. The IR-InSight is ideal for roofing, insulation, or electrical contractors. Finally, the power of infrared is within reach and InSight.



IR-InSight™

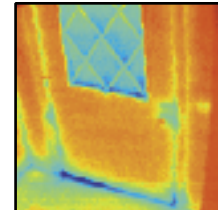
Industrial Roofing

The incredible sensitivity of the IR-InSight™ makes water saturated roof insulation stand out. Its large display allows the user to easily find the questionable roof sections then snap up to 150 high quality infrared images. Included is ImageView™ software to colorize and store the images in formats ready for high quality proposals.



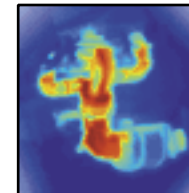
Insulation – Building Envelope Inspection

The IR-InSight is perfect for detection of moisture accumulation, missing insulation, thermal bridges and air leakage. These conditions cause unique thermal profiles that are captured by the IR-InSight. Either snap images or create full video capture, using the RS-170 video output connection into a your portable video recorder.



Electrical / Mechanical Inspection

Performing fast - inexpensive thermal inspections is done easily with the IR-InSight. With the affordability of the IR-InSight, you can outfit more inspectors to maintain critical equipment.



Process Monitoring / Quality Control

Monitoring processes can save time and money by viewing the application in real time with the help of the IR-InSight's full video rate capability. Automotive, petrochemical, plastic injection molding, die casting, printed circuit boards and paper processing are all applications where thermal monitoring could be a significant tool.





Specifications

Performance

Detector	Uncooled Microbolometer (160 x 120 pixel array)
Pixel Size	50 μ m Square Pixels
Spectral Band	8 μ m to 14 μ m
NETD	< 60 mK @30°C
Video Frame Rate	30 Hz
Cryogenic Cooling	None Required

Display & Image Storage

Digital Display	3 ½" LCD
Digital Storage Medium	Internal Flash Memory with 150 Image Capacity
Image Transfer	Via RS-232 Connection to PC With Supplied Software

Software

Image File Format	Transferred as PGM format and Saved as JPEG or BMP (Microsoft Word Compatible)
Colorization	Multiple Palette Choices Available

Standard Optics

17mm f/1.0 Germanium IFOV (m rad)	Field of View: 27° Horizontal, 20° Vertical 3.0
-----------------------------------	--

Interfaces

Image Transfer	RS-232
Video Output	RS-170 NTSC

Electrical

Battery	NiCd 12V 2Amp
---------	---------------

Physical Dimensions

L x W x H	5 x 3.5 x 11 inches
Weight (with battery)	4.12 lb

Standard Equipment

Camera with 17mm f/1.0 lens	2 Rechargeable Batteries
Battery Charger	Neck Strap
Lens Cap	Heavy Duty Carrying Case
ImageView™ Software	Operation Manual
Application Manual	

© Infrared Solutions Inc. 11/2001